

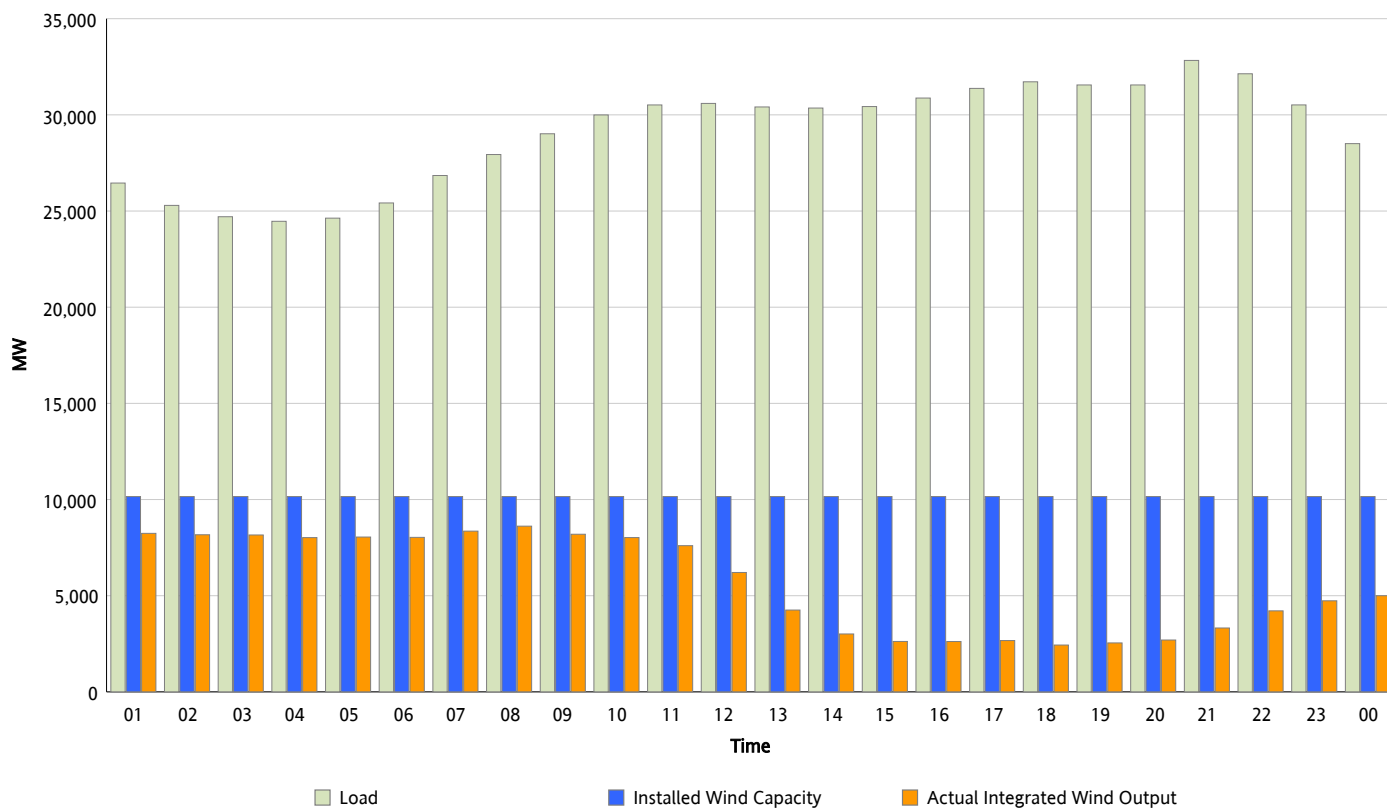


ERCOT Grid Operations

Wind Integration Report : 04/06/2013

Peak Load	32,831 MW
Load Peak Hour (HE)	21
Wind Over Peak	3,322 MW
Wind Record 02/09/13	9,481 MW
Max Wind Value*	8,755 MW
Wind Peak Time	07:32
Wind Integration %	31.3 %

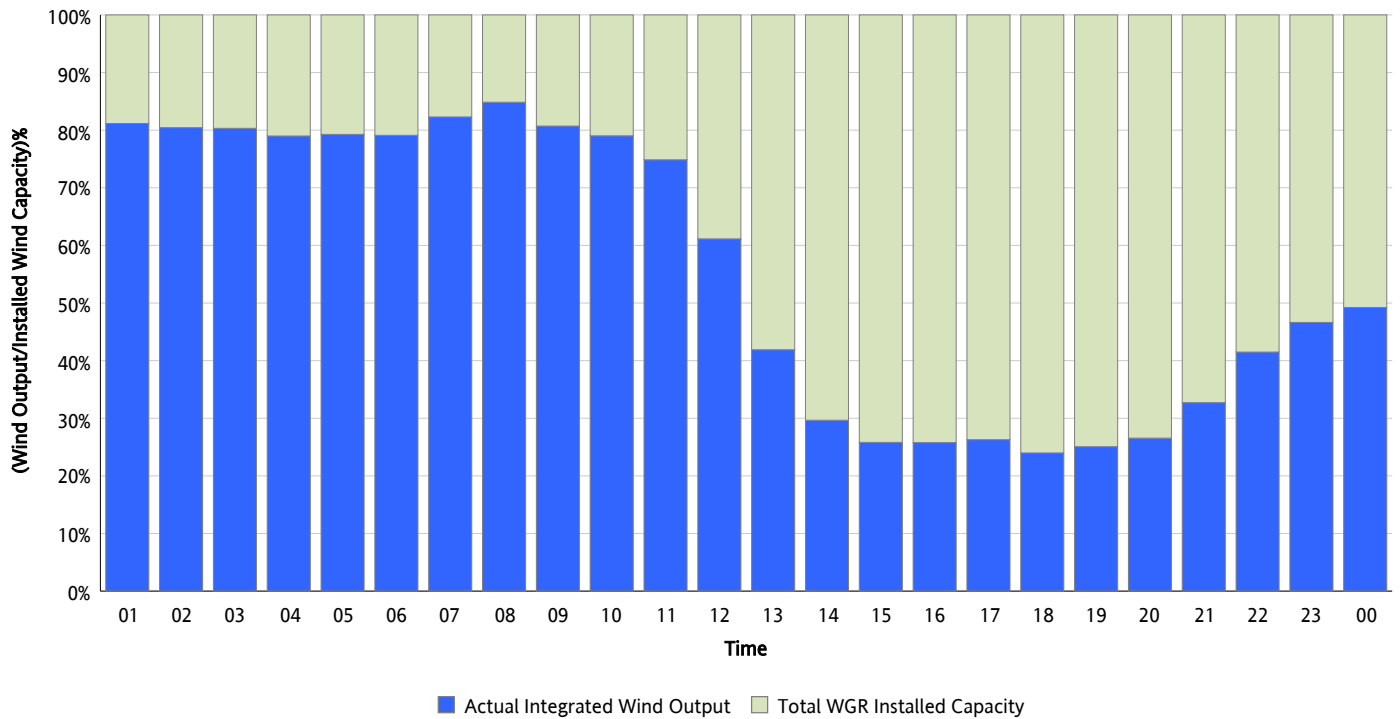
Hourly Average Actual Load vs. Actual Wind Output
04/06/2013



** Wind Record and Wind Max represent instantaneous values and the rest of the values are integrated over the hour*

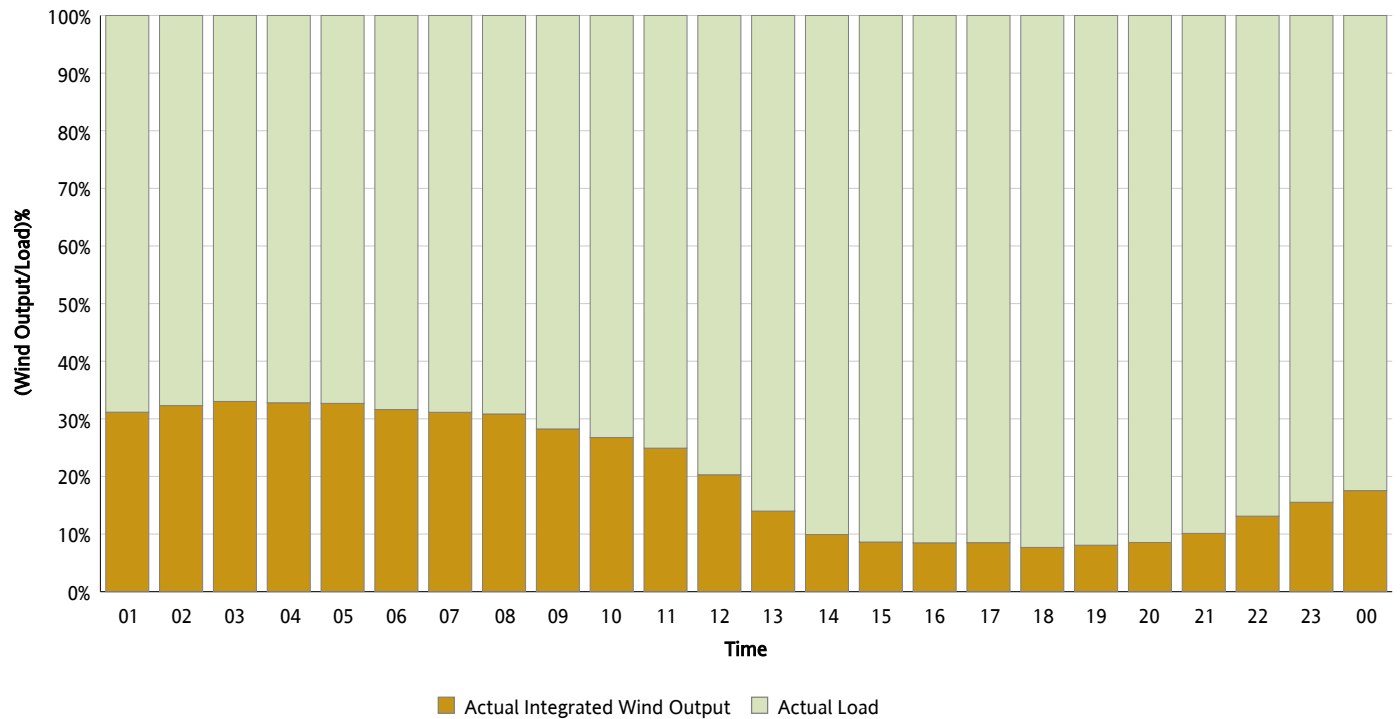
Actual Wind Output as a Percentage of the Total Installed Wind Capacity

04/06/2013



Actual Wind Output as a Percentage of the ERCOT Load

04/06/2013



ERCOT Load vs. Actual Wind Output

03/30/2013 - 04/06/2013

